



The only awarding body
run *by* counsellors
for counsellors

2023-2024

Specification

Level 5 Diploma in Psychotherapeutic Counselling (PC-L5)

This RQF qualification is regulated by Ofqual in England, Qualifications Wales in Wales and CCEA in Northern Ireland.

Qualification/learning aim number: 500/8386/7

Sector subject area: 1.3 Health and Social Care

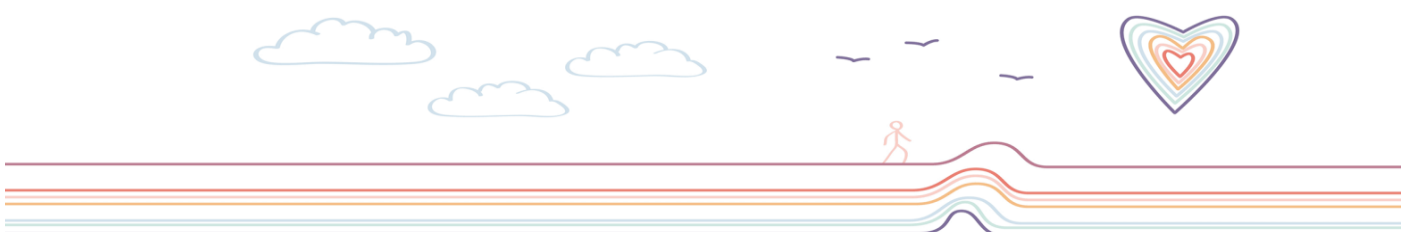
Counselling & Psychotherapy Central Awarding Body (CPCAB)

P.O. Box 1768
Glastonbury
Somerset
BA6 8YP

Tel. 01458 850 350

Website: www.cpcab.co.uk

Email: contact@cpcab.co.uk



Contents

Page

1. Qualification Information	3
2. Qualification Summary	6
3. Minimum Assessment Requirements	8
4. Tutor-Assessor Qualifications and Experience	9
5. Candidate Entry Requirements	10
6. Fit for Purpose	11
7. Progression Routes	12

Please note:

This document, along with candidate support materials, can be downloaded from the CPCAB website. If you need help with the accessibility of this document, please email contact@cpcab.co.uk with your request.

Find us on [Facebook](#)

Follow us on [LinkedIn](#)

Watch us at [CPCAB Videos](#)

Discover new & interesting things at [a New Vision for Mental Health](#)

1. Qualification Information

Purpose Statement

This qualification is designed to give learners the knowledge, skills and competencies to work as self-employed counsellors in independent practice. It also equips learners to take on a senior counselling role in an organisational context where client assessment, referral and routine evaluation are part of the role.

This qualification will enable successful candidates to work as counsellors in a range of job and career opportunities, which include but are not limited to:

- An autonomous counsellor in private practice or agency settings.
- Work as a senior counsellor within a counselling agency.
- The graduate may choose to diversify into the area of teaching counselling within a FE or HE context providing they hold suitable teaching experience or qualifications.

Funding	The qualification is eligible in England for Advanced Learner Loans (19+) The link to the government website which provides details of funding for this qualification can be found here: ESFA: funding rules, rates and formula
Level	5 ¹
Guided Learning Hours (GLH)	120 (minimum)
Total Qualification Time (TQT)	458
Credit value	46
Minimum Age	19 years ² . Please see CPCAB Candidate Entry Requirements .

¹ Equivalent to European Qualification Framework (EQF) level 5 and Scottish Credit Qualification Framework (SCQF) level 8.

² This age requirement is linked to Ofqual's system for categorising qualifications.

Entry Requirements	<p>CPCAB Level 4 Diploma in Therapeutic Counselling (TC-L4) or the Recognised Prior Learning (RPL) equivalent (minimum 420 Guided Learning Hours), in addition to appropriate pre-TC-L4 (or equivalent) training.³</p> <p>Please see:</p> <ul style="list-style-type: none"> • CPCAB Candidate Entry Requirements for criteria considered important in selecting applicants for a programme leading to PC-L5. • CPCAB's RPL Guidance.
Assessment	<p>Proficient (Pass)/Not Proficient (Fail)</p> <p>Candidates must be Proficient in both internal and external assessment and meet all the qualification requirements including all placement hours to achieve the qualification.</p> <p>Internal assessment: tutor assessment of candidate portfolio evidencing minimum assessment requirements and verified by CPCAB.</p> <p>See CPCAB's Minimum Assessment Requirements.</p> <p>External assessment: externally assessed case review (3,000-3,500 words).</p>
Additional Qualification Requirements	<p>Personal counselling: a minimum of 40 hours of personal counselling by the end of the course. This can include hours undertaken prior to the start of the course but at least 10 hours of personal therapy must be undertaken during the training year itself.⁴</p> <p>Client work: a minimum of 60 hours formally contracted counselling (one-to-one), including client assessment.</p> <p>Clinical Supervision: either group or one-to-one supervision – as per the supervision ratio requirements of their chosen ethical framework or professional membership association.⁵</p>
Staffing and Resources	<p>At least two tutor-assessors must be involved in all aspects of internal candidate assessment.</p> <p>See Tutor-Assessor Qualifications and Experience for further details of CPCAB requirements.</p>

³ CPCAB recommends a minimum of 450 practice hours in line with [BACP](#) individual accreditation requirements.

⁴ Candidates wishing to apply to UKCP for registration as a psychotherapeutic counsellor should be aware that the minimum requirement for personal counselling is 105 hours and at least 50 hours must be undertaken during training. See CPCAB website for further information.

⁵ CPCAB recommends that candidates access appropriate clinical supervision to meet the requirements of their chosen ethical framework or professional membership association. For example, [BACP Supervision Guidelines](#) for trainees require a minimum of 1½ hours individual supervision per month (or the equivalent if in group supervision) or 1 hour of supervision for every 8 hours of client work.

Internal Quality Assurance (IQA)	Centres are required to have robust IQA (internal moderation and verification) processes that are verified by CPCAB. See Guide to Internal Moderation and Verification for Centres .
Progression	<ul style="list-style-type: none"> • Open University Foundation Degree in Counselling.⁶ • CPCAB Level 6 Certificate in Therapeutic Counselling Supervision (TCSU-L6) plus a recommended minimum 450 supervised practice hours.⁷ <p>See CPCAB's Progression Route for details.</p>
Candidate Registration Fee	£369
Centre Application for CPCAB Approval to Offer the Qualification	Centre application fee: £389 (one-off fee). ⁸ Centres are expected to design their own training programmes. ⁹ Sample schemes of work are available from CPCAB on request.
Online Delivery Options	This qualification is eligible for fully in-person, blended or online delivery. Please see how to run CPCAB's qualifications online for more information.

⁶ To access the OU Foundation Degree candidates must have completed the CPCAB Level 4 Diploma in Therapeutic Counselling (TC-L4). CPCAB level 5 qualifications contribute 30 credits towards the achievement of the [Foundation Degree](#).

⁷ This is in line with BACP counsellor individual accreditation requirements

⁸ In order for your application to be processed the approval fee will need to accompany your application. This is non-refundable. Payment can be made by cheque payable to CPCAB or via Bacs payment. Please contact finance@cpcab.co.uk for more information.

⁹ All centre-designed courses must be approved by CPCAB before candidates can be registered. Although the delivery of courses may differ from centre to centre, all delivery must enable the candidates to achieve the learning outcomes of the qualification.

2. Qualification Summary

Learning Outcomes and Assessment Criteria (PC-L5)

Learning outcomes (<i>skills, knowledge, understanding</i>)	Assessment criteria (<i>to assess learning outcome</i>)
The learner will/will be able to:	The learner can:
1. Work safely, legally and ethically as an independent counsellor	1.1 Reflect on issues relating to establishing and managing an independent practice. 1.2 Work within an ethical, legal and professional framework for independent counselling work. 1.3 Respond to and manage ethical dilemmas. 1.4 Research and access appropriate sources of support.
2. Work with complex aspects of the counselling relationship	2.1 Manage the conflicts and demands of working within relational boundaries in independent practice. 2.2 Use theory and research to work with implicit aspects of the therapeutic relationship. 2.3 Work with challenges and difficulties that arise in the therapeutic relationship.
3. Use theory and research to work with client diversity in independent practice	3.1 Reflect on theory and research on diversity issues and apply insights to counselling work. 3.2 Reflect on diverse cultural perceptions of mental health and well-being. 3.3 Work with the social, cultural and biological factors that impact on individual clients. 3.4 Reflect on diversity issues which impact on clients accessing counselling in independent practice.

<p>4. Use a coherent approach to respond to the needs of individual clients</p>	<p>4.1 Use a coherent assessment strategy to assess individual clients and their needs.</p> <p>4.2 Critically reflect on different approaches to client assessment.</p> <p>4.3 Evaluate choice of therapeutic interventions in relation to individual clients and their needs.</p> <p>4.4 Reflect on and evaluate the counselling work in collaboration with the client.</p> <p>4.5 Use research findings on client factors to inform counselling work.</p>
<p>5. Work with self-awareness as an independent practitioner</p>	<p>5.1 Use insights from work on implicit aspects of own self, personal history and patterns of relating to inform counselling work.</p> <p>5.2 Compare and contrast different theoretical perspectives on the use of self in counselling work.</p> <p>5.3 Use awareness of self to work with the impact of power and authority in the counselling relationship.</p> <p>5.4 Use research findings on therapist factors to inform client work.</p>
<p>6. Use theory, research and skills within a coherent framework for independent counselling practice</p>	<p>6.1 Use theory to work with implicit aspects of client's self, personal history and patterns of relating.</p> <p>6.2 Use research findings to critically evaluate and develop own theoretical understanding.</p> <p>6.3 Integrate skills and techniques within a coherent theoretical framework.</p> <p>6.4 Apply research findings to inform work with common life problems and common mental health problems.</p> <p>6.5 Integrate concepts of psychopathology when assessing and referring clients.</p>
<p>7. Monitor and maintain professional effectiveness as a counsellor in independent practice</p>	<p>7.1 Critically evaluate own use of clinical supervision.</p> <p>7.2 Implement a clinical audit tool.</p> <p>7.3 Research and plan own programme for Continuing Professional Development.</p>

See the [PC-L5 Tutor Guide](#) for candidate guidance to criteria and notes for tutors.

3. Minimum Assessment Requirements

To achieve the qualification, candidates must be internally assessed as **Proficient** in all 7 learning outcomes of the qualification and must be **externally** assessed (by CPCAB) as **Proficient**.

Candidates must give **two** pieces of evidence for each criterion. In addition, the Candidate Learning Record (must include references to all three assessment methods (documents, tutor observation and testimony) across the whole CLR.

INTERNAL ASSESSMENT – must include all three methods of assessment		
Course activities	Assessment method ¹¹	Types of evidence (2 references for each assessment criterion)
<ul style="list-style-type: none"> Professional discussion and workshops Seminars, personal development workshops and group work Projects and presentations Review of knowledge, skills and clinical work Review of personal attitudes Tutorials 	Documents	<ul style="list-style-type: none"> Learning review ¹² 2 written assignments (3,000 - 3,500 words) Supervision record ¹³ Client record (60 hours) Review of 15-minute transcript of clinical work – can be part of tutor observed skills assessment * 1 Self-review ¹⁴ Therapy record (40 hours)¹⁵ Tutorial records (when written by the candidate)
<ul style="list-style-type: none"> Assessed skills practice Assessed case presentations Simulated counselling practice sessions Group work Group training supervision Seminars and workshops Tutorials 	Tutor observation	<ul style="list-style-type: none"> 1 tutor-observed counselling practice session 1 case presentation Tutorial records (when written by the tutor)
<ul style="list-style-type: none"> Workplace experience (60 client hours) Skills practice Group work Case presentations Group training supervision Seminars and workshops 	Testimony	<ul style="list-style-type: none"> 1 supervisor's report Peer feedback

¹¹ Proforma and guide sheets for internal assessment can be downloaded from the [CPCAB Website](#).

¹² This is an on-going review of learning during the course (also called a learning journal).

¹³ CPCAB recommends that the candidate's agency provides appropriate clinical supervision to meet the requirements of their chosen ethical framework or professional membership association. For example, [BACP Supervision Guidelines](#) for trainees require a minimum of 1½ hours individual supervision per month (or the equivalent if in group supervision) or 1 hour of supervision for every 8 hours of client work.

¹⁴ Self-evaluation of learning, goals, progress, learning needs and completion of the learning tasks (criteria).

¹⁵ This can include hours undertaken prior to the start of the course, but at least 10 hours must be during the course.

EXTERNAL ASSESSMENT	
Candidates complete a structured case review (3,000 –3,500 words). This is sent to CPCAB for assessment. ¹⁶	
MARKING SCHEME	
Internal assessment:	Candidates must achieve all 7 learning outcomes and meet all the qualification requirements including all placement hours to be assessed as Proficient.
External assessment:	Candidates must achieve at least ONE mark in each section of the case review and an overall mark of 11 out of 21 to be assessed as Proficient.

¹⁶ Guidance and exemplar material is available for download from the [CPCAB website](#).

4. Tutor-Assessor Qualifications and Experience

Level 5 Diploma in Psychotherapeutic Counselling (PC-L5)					
	Minimum qualification	Personal therapy + professional association membership	On-going Continuing Professional Development (CPD)	Minimum practice experience	Minimum experience as tutor
Core tutor *two required if teaching separately	420 hours therapeutic counselling qualification at level 4 or above e.g. TC-L4 And 30 hours of post-qualifying therapeutic qualification	40 hours of personal therapy And Member of a professional association for counselling or psychotherapy	30 hours per year CPD activities	2 years post-qualifying supervised counselling practice as an autonomous counsellor And Supervision qualification or 1 years' experience of providing supervision to individuals in a counselling setting	Teaching qualification And 2 years teaching and assessing at level 3 and 4 or above
Additional tutor(s) *relevant if co-tutoring with core tutor	420 hours therapeutic counselling qualification at level 4 or above e.g. TC-L4	Minimum 10 hours personal therapeutic counselling And Member of a professional association for counselling or psychotherapy	30 hours per year CPD activities	1- year post-qualifying supervised counselling practice And Supervision qualification or experience of providing supervision to individuals in a counselling setting	Teaching qualification or be working towards one And 1- year teaching and assessing at level 3 and 4 or above

5. Candidate Entry Requirements

This qualification is not suitable for those who are currently in a state of severe emotional difficulty and/or severe psychological distress. Centres need to ensure that all potential candidates are made aware of the nature of the course, and in particular that the course involves experiential elements that will involve some personal disclosure and associated personal developmental activities.

Title	Age	Entry requirements/ RPL	Criteria considered important for selecting candidates
PC-L5	19 or over	TC-L4 or equivalent/RPL (minimum 420 GLH) plus appropriate pre- TC-L4 training (or equivalent).	<ul style="list-style-type: none"> ✓ Ability to identify reasons for training beyond just personal development ✓ Provide references ✓ Academically and emotionally able to cope with this level of training ✓ Ability to work with difference and diversity ✓ Possess personal qualities of imagination, intuition, openness and ability to benefit from self-development ✓ Ability to form a therapeutic relationship ✓ Have self-awareness, insight, honesty and integrity ✓ Emotional stability and the absence of personality disturbance ✓ Ability to challenge and be challenged ✓ Ability to respond sensitively and empathically to others ✓ Professional qualities required for autonomous practice

We recommend that tutors carry out a face to face individual interview to ascertain a candidate's suitability for this level of training.

6. Fit for Purpose

This qualification has been designed to take account of the latest research findings on what makes counselling effective and is underpinned by the CPCAB model of practitioner development.

The qualification currently offers routes on to the following professional body registers accredited by the Professional Standards Authority (PSA):

- BACP – British Association for Counselling and Psychotherapy
- NCPS – National Counselling and Psychotherapy Society
- UKCP – United Kingdom Council for Psychotherapy (Standards for Psychotherapeutic counselling). Learners applying to UKCP must also acquire CPCAB Level 5 diploma in psychotherapeutic counselling.
- COSCA – Counselling and Psychotherapy in Scotland
- ACC – Association of Christians in Counselling and Linked Professions

The qualification is also mapped to following professional and occupational standards:

- QAA benchmark standards for counselling and psychotherapy
- Counselling and Mental Health National Occupational Standards
- BACP

The assessment strategy maintains a focus on practitioner skills and qualities as well as on written evidence. The combination of tutor assessment and separate external assessment by CPCAB values both objective independent assessment and the relational knowledge of the candidate and their work. The qualification is reviewed annually to ensure it remains fit-for-purpose.

Centres have to meet robust centre approval requirements before they can deliver this qualification. All tutors are approved and standardised by CPCAB and centres are visited twice a year by a CPCAB external verifier.

7. Progression Routes

PC-L5 is part of a suite of CPCAB qualifications. Once the candidate has completed this qualification and acquired sufficient client work experience, they may wish to progress to the Open University's Foundation Degree in Counselling. Following sufficient client work experience they can also progress to CPCAB Level 6 Certificate in Therapeutic Counselling Supervision (TCSU-L6).

For details of all CPCAB qualifications please see below or click here: [Qualifications - CPCAB](#) for further information.

